

## The Bolanachi Building

Grange Road, London, SE16



The Bolanachi Building in Spa Road continued the substantial redevelopment programme in the 'Bermondsey Spa' area by the Hyde Housing Group.

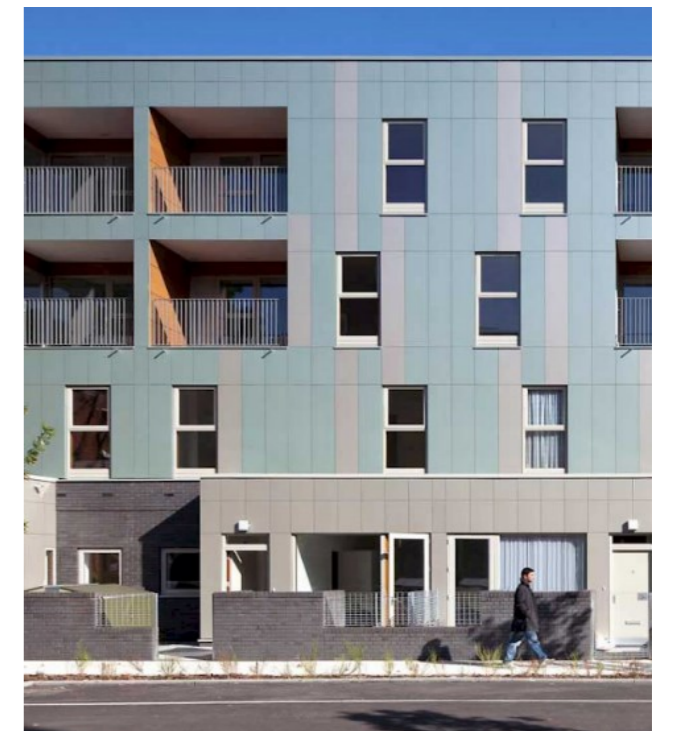
The development comprised 139 residential apartments for general needs affordable rent, shared ownership and outright sale with units from 1 - 3 bedrooms in size. There is also a small commercial element.

The scheme also included extensive under podium parking and community landscaping provision. Features of the scheme that make it stand out from neighbouring developments included an impressive entrance lobby / foyer area rising to eight storeys in height. This area is semi enclosed and covered with a membrane pavilion style roof.

Extensive landscaping included a purpose built podium garden deck for the residents together with an adjacent 'green road' and local playground redevelopment.

The building design is of high quality with carefully selected materials and finishes to compliment a project of such local significance.

This scheme has won a number of awards including the RTPI Awards 2011 – Commendation for sustainable communities, Housebuilder Award 2010 – Best Regeneration Project, HCA Awards 2010 – Quality of place and many more.



**Client:** Hyde Housing Association

**Architect:** Levitt Bernstein Architects

**Structural Engineer:** Peter Brett Associates

**Contract value:** £20M

**Form of Contract:** PPC2000