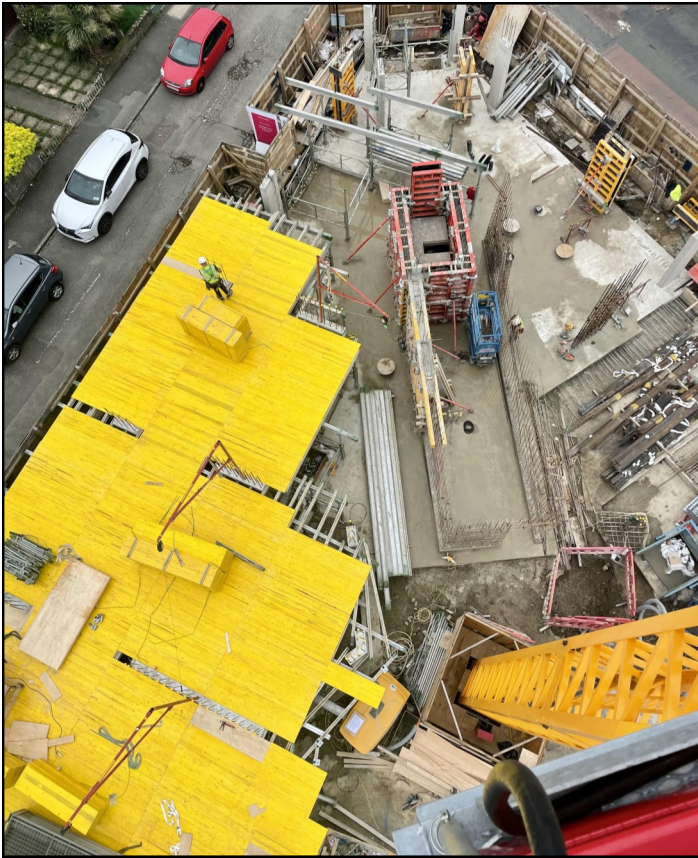


Malmesbury Terrace

Project News Update - Issue 6 - October 2021



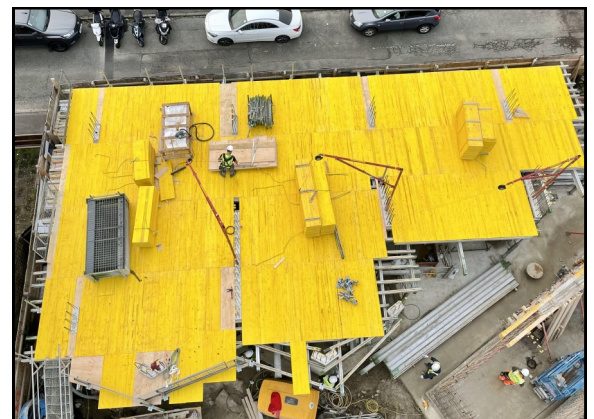
rooff.co.uk



We are pleased to issue you the October newsletter, reporting on the progress of the 15 new homes under construction at Malmesbury Terrace. This newsletter provides a brief overview of the current works underway and forthcoming works and other project-related social value activity.

Over the last four weeks we have been busy on site working on the foundations of the building, which are now complete. Over the next four weeks we will be working on the concrete frame for the first and second floors of the building.

Our Site Manager, Nicu Zafiu, will be on site Monday-Friday and is responsible for the day-to-day running of the project. If you have any questions about site operations please contact Nicu or our Contracts Manager, Carl Whelan, on the contact details below.

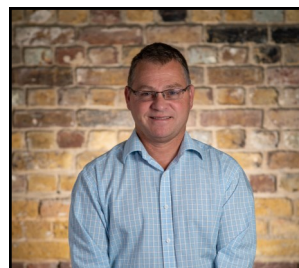


Nicu Zafiu

Site Manager

07908 137 112

nbotezatuzafiu@rooff.co.uk



Carl Whelan

Contracts Manager

020 8709 1777 (Head Office Number)



Rooff Ltd

The Granary, 80 Abbey Road, Barking, London IG11 7BT

Malmesbury Terrace

Project News Update - Issue 6 - October 2021



rooff.co.uk

We endeavour to keep any local disturbance or disruption to a minimum and apologise in advance for any general construction noise that may arise from the works. Maintaining the Health and Safety of everyone remains our highest priority but if you have any particular concerns please contact the Site Manager.

We are keen to maintain dialogue with the local community so all relevant parties are aware of the works taking place. All works will be carried out in accordance with planning conditions, local authority regulations, building control and current legislation.

Working Hours

Working hours on site are between 8am and 6pm Monday to Friday (excluding bank holidays) and 8am to 1pm Saturdays (if required). Workers will arrive earlier in the mornings to accommodate travel arrangements but will not start any work before 8am.

Site Security

Our site is monitored by 24 hour CCTV and any intruders will be identified and security and police will be notified and attend immediately. **Site hours are 8am - 6pm Monday to Friday and 8am - 1pm Saturdays (if required)**. If you hear or see anything outside of these hours please call our Security Contractor Guardian Security on 017 0822 3823 who operate a 24 hour service.

COVID 19

The site is operating with specific procedures in place to minimise the risk of catching or transmitting the COVID 19 virus, and we are continuing to appraise this in line with the latest Construction Leadership Council and Government guidelines.

Considerate Constructors Scheme

This site is registered with the Considerate Constructors Scheme, (**registered No 125207**) the benefits of which are to ensure that we consider and adhere to the schemes requirements, such as, appearance, respecting the community, protecting the environment, safety and caring for the workforce. If you would like further information on the Considerate Constructors Scheme please visit their website at www.ccscheme.org.uk.



Local Opportunities

We have been working closely with Our Newham Work and there may be opportunities for the local employment of individuals involved in construction. If you are interested in finding out more about these opportunities please email enquiries@rooff.co.uk quoting 'Malmesbury Terrace'.

Supporting Local People

As part of our commitment to work with the local community we are working closely with Our Newham Work and Newham Council. At the end of October we are volunteering at a career event for Plashet Girls School and a Year 5 building competition at Curwen Primary School.

We are very pleased to be working on this project and look forward to the successfully delivery of the new homes for the local community. We thank you for your support and understanding through the works to date and if you have any queries or concerns do not hesitate in contacting the site staff.

If you would like project updates please email enquiries@rooff.co.uk. Progress photos of the project and a copy of the latest newsletter can be found on our website www.rooff.co.uk on the current projects page. If you would like this information communicated by an alternative method please email enquiries@rooff.co.uk.



Rooff Ltd

The Granary, 80 Abbey Road, Barking, London
IG11 7BT