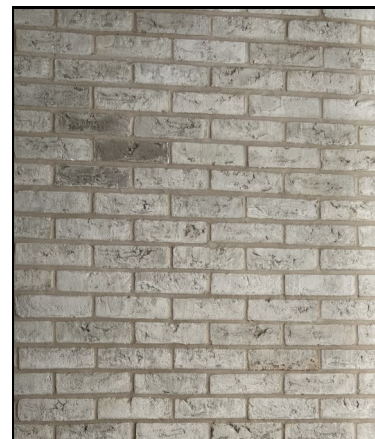
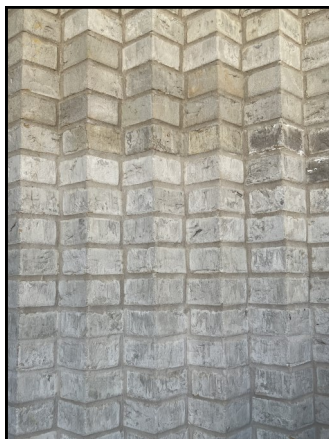


We are pleased to issue the June newsletter for the project at Brasted Close for London CLT.

Lots has been happening on site over the last few weeks and we are pleased to say that the brickwork to the building is now complete. The external staircase has been fitted.

We are currently fitting the kitchens and bathrooms inside the flats. Forthcoming works include the removal of the scaffolding.

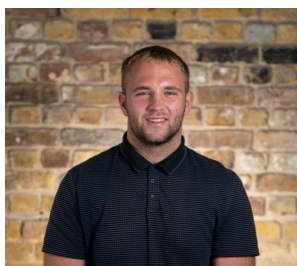


Our Site Manager, Gary Glover and Assistant Site Manager, George Stevens-Johnstone is on site Monday-Friday. If you have any questions about our works on site please contact Gary or George on the contact details below.



Gary Glover
Site Manager

07769 727 176
gglover@rooff.co.uk



George Stevens-Johnstone
Assistant Site Manager

07956 159 748
gjohnstone@rooff.co.uk

Rooff Head Office Number 020 8709 1777

Out of Hours Emergency Number 01708 223 823

Interested in a home?

There are two 2-bedroom homes still available, if you are interested in applying or being considered for our waiting list for a 1-bedroom home please contact hannah@londonclt.org for more info.



Hannah Gretton is now on maternity leave, please Hannah Emery-Wright at hannah@londonclt.org or on 07469859846, if you'd like to be involved in the Community Steering Group in general, or have any questions about the social impact and community side of these homes.



Site Security

Our site is monitored by 24 hour CCTV and any intruders will be identified and security and police will be notified and attend immediately. Site hours will be 8:00am - 6:00pm Monday to Friday, if you hear or see anything outside of these hours please call our **Security Contractor Guardian Security** on **01708 223823** who operate a 24 hour service.

COVID 19

The site is operating with specific procedures in place to minimise the risk of catching or transmitting the COVID 19 virus, and we are continuing to appraise this in line with the latest Construction Leadership Council and Government guidelines.

Working Hours

Working hours on site are between 8am and 6pm Monday to Friday (excluding bank holidays) and 8am to 1pm Saturdays (if required).

Considerate Constructors

This site is registered with the Considerate Constructors Scheme, (registered No **126346**) the benefits of which are to ensure that we consider and adhere to the schemes requirements, such as, appearance, respecting the community, protecting the environment, safety and caring for the workforce.



Local Opportunities

There may be opportunities for the local employment of individuals involved in construction. If you are interested in finding out more about these opportunities please email enquiries@rooff.co.uk quoting 'Brasted Close'.

Lewisham Job Fair

This month Rooff's Development Director, Steve Drury and Social Value Coordinator, Lucy Dunne attended the Lewisham Job Fair held at Lewisham Old Town Hall. The event was attended by over 100 people, with a number of people showing an interest in the construction industry, whom Steve and Lucy provided advice and guidance too.

Thank You

We would like to take this opportunity to thank you for your support and understanding through the works.

If you would like project updates please email enquiries@rooff.co.uk. If you would like this information communicated by an alternative method please email enquiries@rooff.co.uk.

